



Engine	Yuchai YC4A90-T22
Rated Power	66 kW (89 hp / 90 ps) @ 2,300 rpm
Operating Weight	5,920 kg
Standard Bucket Size	1.2 m ³
Standard Breakout Force	50 kN
Standard Dump Clearance	3,050 mm

820H WHEEL LOADER

820H SPECIFICATIONS >>>

ENGINE

Emission Regulation	Tier 2 / Stage II
Manufacturer	Yuchai
Model	YC4A90-T22
Rated Power	66 kW (89 hp / 90 ps) @ 2,300 rpm
Peak Torque	320 N·m @ 1,450~1,650 rpm
Displacement	4.8 L
Number of Cylinders	4
Aspiration	Naturally aspirated

TRANSMISSION

Transmission Type	Countershaft, powershift
Torque Converter	Single stage, three elements
Maximum Travel Speed, fwd	25 km/h
Maximum Travel Speed, rev	25 km/h
Number of Speed, fwd	2
Number of Speed, rev	2

AXLES

Differential Front Type	Conventional
Differential Rear Type	Conventional
Axle Oscillation	±10°

STEERING

Steering Configuration	Articulated
Steering Relief Pressure	14.8 MPa

BRAKES

Service Brake Type	Caliper discs brake
Service Brake Actuation	Air over hydraulic
Parking Brake Type	Disc
Parking Brake Actuation	Mechanical

HYDRAULIC SYSTEM

Main Pump Type	Gear
Main Relief Pressure	20 MPa
Raise	4.5 s
Dump Time	1.0 s
Float Down Time	3.0 s
Fastest Total Cycle Time	8.5 s

LOADER ARM PERFORMANCE WITH STANDARD BUCKET 1.2 m³

Tipping Load - Straight (ISO 14397-1:2007)	4,200 kg
Tipping Load - Full Turn (ISO 14397-1:2007)	3,700 kg
Bucket Breakout Force	50 kN
A Maximum Hinge Pin Height	3,800 mm
B Dump Clearance at Full Height Discharge	3,050 mm
C Dump Reach at Full Height Discharge	920 mm
D Maximum Digging Depth, Bucket Level	80 mm
S ₁ Bucket Rollback at Ground Level	55 °
S ₂ Bucket Rollback at Carry	60 °
S ₃ Bucket Rollback at Maximum Height	65 °
S ₄ Maximum Dump Angle at Full Height	45 °

BUCKET PERFORMANCE

Reference Bucket	0.7-1.5 m ³
------------------	------------------------

DIMENSIONS

E Ground Clearance	320 mm
G Wheelbase	2,650 mm
H Cab Height	2,900 mm
J Wheel Tread	1,520 mm
K Width over Tires	1,940 mm
L Length with Bucket Down	6,400 mm
M Turn Angle, Either Side	38 °
P Rear Angle of Departure	30 °
R ₁ Turning Radius, Bucket Carry	5,300 mm
R ₂ Turning Radius, Outside of Tire	4,810 mm
W Width over Bucket	2,225 mm

TIRES

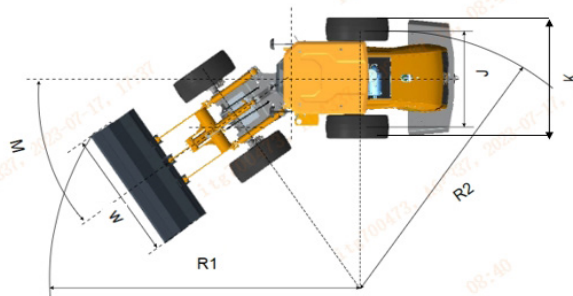
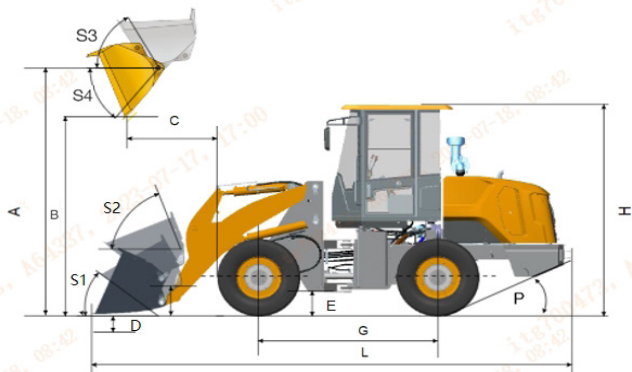
Tire Size	16/70-20 14PR
-----------	---------------

OPERATING WEIGHTS

Operating Weight	5,920 kg
------------------	----------

SERVICE CAPACITY

Fuel Tank	92 L
Engine Oil	8 L
Cooling System	15 L
Hydraulic Reservoir	65 L
Transmission and Torque Converter	25 L
Axles, each	16 L



Guangxi Liugong Machinery Co., Ltd.

No. 1 Liutai Road, Liuzhou, Guangxi 545007, PR China
T: +86 772 3886124 E: overseas@liugong.com
www.liugong.com

Specifications and designs are subject to change without notice. Machines shown may include optional equipment. Liugong standard and optional equipment may vary from region to region. Please consult your Liugong dealer for information specific to your area. Engine power kW is converted to horsepower (1 kW=1.3596 ps and 1 kW=1.3410 hp) in this file.

07/2023 Designed by LiuGong