



<b>Engine</b>	Cummins QSL
<b>Rated Power</b>	214 kW (287 hp / 291 ps) @ 2,100 rpm
<b>Net Power</b>	202 kW (271 hp / 275 ps) @ 2,100 rpm
<b>Operating Weight</b>	39,000 kg
<b>Max. Digging Depth</b>	6,890 mm
<b>Standard Bucket Capacity</b>	2.0 m <sup>3</sup>

# 939F EXCAVATOR

# 939F SPECIFICATIONS >>>

## ENGINE

Emission Regulation	CN III
Manufacturer	Cummins
Model	QSL
Rated Power	214 kW (287 hp / 291 ps) @ 2,100 rpm
Net Power	202 kW (271 hp / 275 ps) @ 2,100 rpm
Peak Torque	1,343 N·m @ 1,600 rpm
Number of Cylinders	6
Displacement	8.9 L

## UNDERCARRIAGE

Number of Shoes per Side	49
Number of Upper Rollers per Side	2
Number of Bottom Rollers per Side	9

## TRACK DRIVE

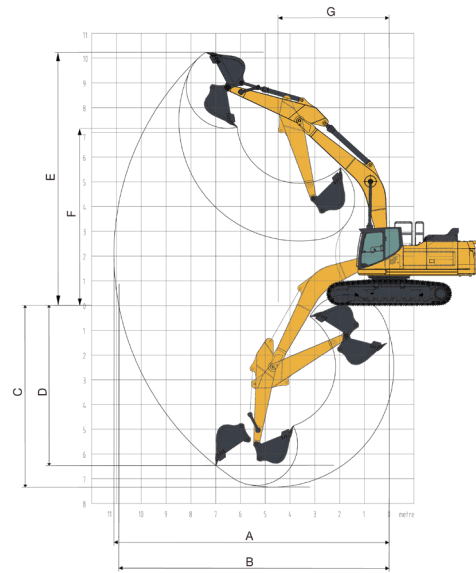
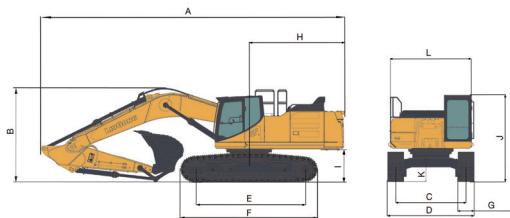
Maximum Travel Speed	5.5 km/h
Drawbar Pull	320 kN

## HYDRAULIC SYSTEM

Main Pumps Total Flow	2 × 351 L/min
Relief Pressure, main	34.3 MPa

## DIMENSION

A. Transport Length	11,450 mm
B. Transport Height – Top of Boom	3,800 mm
C. Track Gauge	2,590 mm
D. Undercarriage Width	3,190 mm
E. Length to Center of Rollers	4,140 mm
F. Track Length	5,075 mm
G. Track Shoe Width	600 mm
H. Tail Swing Radius	3,593 mm
I. Counterweight Ground Clearance	1,250 mm
J. Overall Height of Cab	3,175 mm
Overall Height of Cab - with OPG	3,310 mm
Overall Height of Cab - with Dome Lamp	3,310 mm
K. Min. Ground Clearance	545 mm
L. Overall Width of Upper Structure	2,995 / 3,163 mm



## BOOM & ARM

Boom Length	6,400 mm
Arm Length	2,900 mm

## BUCKET PERFORMANCE

Std. Bucket Heaped Capacity (Referenced)	2.0 m <sup>3</sup>
--	--------------------

## SERVICE CAPACITIES

Fuel Tank	620 L
Engine Oil	36 L
Cooling System	37 L
Hydraulic Reservoir	240 L
Hydraulic System Total	450 L

## SWING SYSTEM

Swing Speed	10 rpm
-------------	--------

## WORKING RANGE

A. Max. Digging Reach	10,728 mm
B. Max. Digging Reach on Ground	10,527 mm
C. Max. Digging Depth	6,890 mm
D. Max. Digging Depth, 2.5 m (8') Level	6,710 mm
E. Max. Vertical Wall Digging Depth	5,085 mm
F. Max. Cutting Height	9,818 mm
G. Max. Dumping Height	6,655 mm
Bucket Digging Force (ISO)	290 kN
Arm Digging Force (ISO)	227 kN

## Guangxi Liugong Machinery Co., Ltd.

No. 1 Liutai Road, Liuzhou, Guangxi 545007, PR China  
 T: +86 772 3886124 E: overseas@liugong.com  
 www.liugong.com

08/2024 Designed by LiuGong  
 Replace the previous versions of 06/2024

Specifications and designs are subject to change without notice. Machines shown may include optional equipment. LiuGong standard and optional equipment may vary from region to region. Please consult your LiuGong dealer for information specific to your area. Engine power kW is converted to metric hp in this file (1 kW=1.34 hp).