



| | |
|---------------------------------|--------------------------------------|
| Engine | Cummins X15 |
| Rated Power | 391 kW (524 hp / 532 ps) @ 1,800 rpm |
| Net Power | 375 kW (503 hp / 510 ps) @ 1,800 rpm |
| Standard Bucket Capacity | 7,180 mm |
| Maximum Dig Depth | 4.3 m ³ |
| Operating Weight | 70,500 kg |

970E EXCAVATOR

970E SPECIFICATIONS >>>

PERFORMANCE PARAMETERS

| | |
|--|--------------------|
| Operating Weight | 70,500 kg |
| Std. Bucket Heaped Capacity (Referenced) | 4.3 m ³ |
| Maximum Travel Speed | 4.4 km/h |
| Swing Speed | 6.8 rpm |
| Drawbar Pull | 460 kN |
| Bucket Digging Force (ISO) | 393 kN |
| Arm Digging Force (ISO) | 347 kN |

ENGINE

| | |
|---------------------|--------------------------------------|
| Manufacturer | Cummins |
| Model | X15 |
| Rated Power | 391 kW (524hp / 532 ps) @ 1,800 rpm |
| Net Power | 375 kW (503 hp / 510 ps) @ 1,800 rpm |
| Peak Torque | 2,373 N·m @ 1,400 rpm |
| Number of Cylinders | 6 |
| Displacement | 15 L |

UNDERCARRIAGE

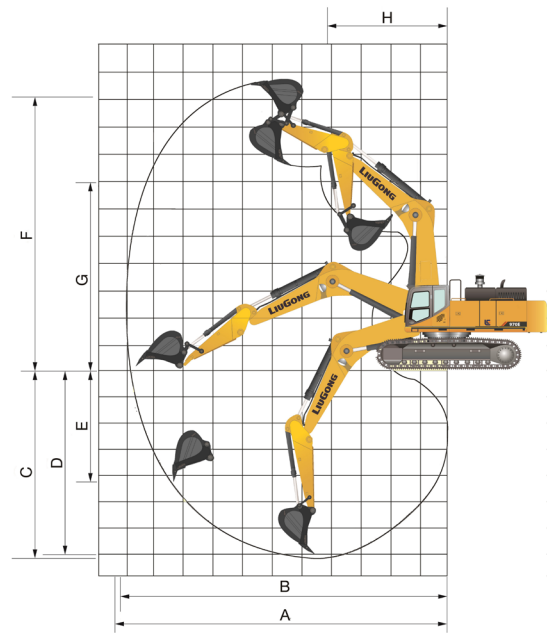
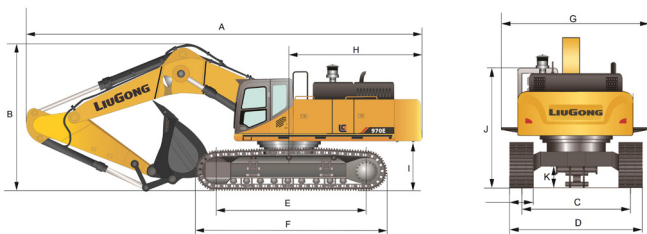
| | |
|-----------------------------------|----|
| Number of Shoes per Side | 48 |
| Number of Bottom Rollers per Side | 8 |
| Number of Upper Rollers per Side | 3 |

DIMENSIONS

| | |
|------------------------------------|--------------------|
| A Shipping Length | 12,230 mm |
| B Shipping Height | 4,710 mm |
| C Track Gauge | *3,350 / 2,710 mm |
| D Undercarriage Width | *4,000 / 3,360 mm |
| E Length to Center of Rollers | 4,750 mm |
| F Track Length | 5,990 mm |
| G Overall Width of Upper Structure | **4,260 / 3,390 mm |
| H Tail Swing Radius | 4,090 mm |
| I Counterweight Ground Clearance | 1,495 mm |
| J Overall Height of Cab | 3,620 mm |
| K Min. Ground Clearance | 867 mm |

* Adjustable track gauge

** With corridor



WORKING RANGE

| | |
|---|-----------|
| Boom Length | 6,600 mm |
| Arm Length | 2,900 mm |
| A Max. Digging Reach | 11,450 mm |
| B Max. Digging Reach on Ground | 11,170 mm |
| C Max. Digging Depth | 7,180 mm |
| D Max. Digging Depth, 2.44 m (8') Level | 7,030 mm |
| E Max. Vertical Wall Digging Depth | 4,070 mm |
| F Max. Cutting Height | 10,950 mm |
| G Max. Dumping Height | 7,030 mm |
| H Min. Front Swing Radius | 4,900 mm |

HYDRAULIC SYSTEM

| | |
|-----------------------|---------------|
| Main Pumps Total Flow | 2 x 450 L/min |
| Relief Pressure, main | 34.3 MPa |

SERVICE CAPACITIES

| | |
|------------------------|-------|
| Fuel Tank | 900 L |
| Engine Oil | 46 L |
| Cooling System | 72 L |
| Hydraulic Reservoir | 360 L |
| Hydraulic System Total | 680 L |

Guangxi Liugong Machinery Co., Ltd.

No. 1 Liutai Road, Liuzhou, Guangxi 545007, PR China

T: +86 772 3886124

E: overseas@liugong.com

www.liugong.com

Specifications and designs are subject to change without notice. Machines shown may include optional equipment. Liugong standard and optional equipment may vary from region to region. Please consult your Liugong dealer for information specific to your area. Engine power kW is converted to horsepower (1 kW=1.3596 ps and 1 kW=1.3410 hp) in this file.

01/2024 Designed by LiuGong
Replace the previous versions of 04/2023