



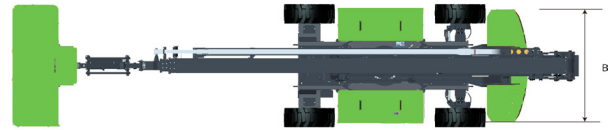
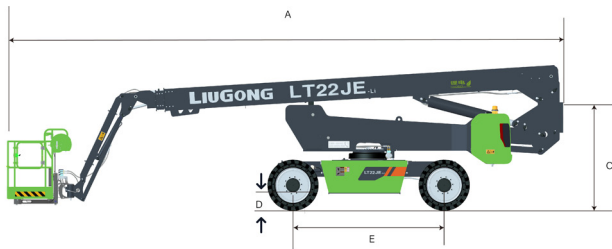
Working Height Max.
Horizontal Reach Max.
Overall Lift Capacity Max.
Overall Width And Length

23.8 m (78'1")
15.7 m (51'6")
300 / 454 kg
(661 / 1000 lb)
2.42 x 9.5 m
(7'11" x 31'2")

LT22JE

Telescopic Boom Lifts-Electric

LT22JE SPECIFICATIONS >>>



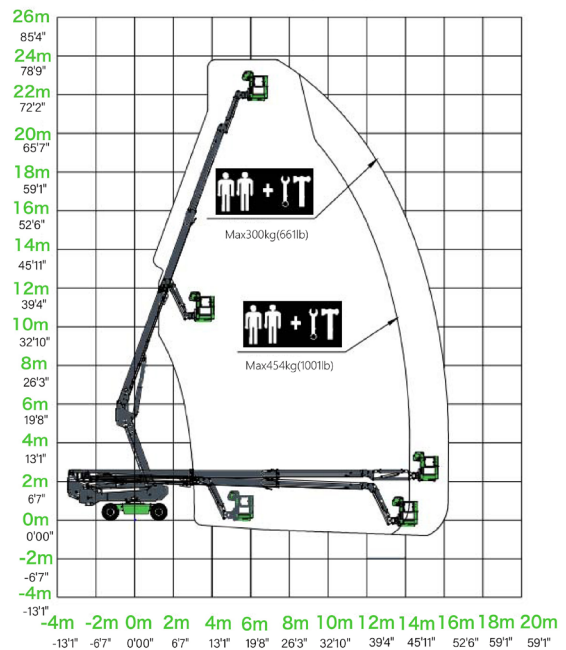
DIMENSIONS	
Working Height Max.	23.8 m (78'1")
Platform Height Max. [↑] Max.	21.8 m (71'6")
Operating Amplitude Max.	16.3 m (53'6")
Horizontal Reach Max.	15.7 m (51'6")
Platform Size (LxWxH)	2.4 x 0.9 x 1.1 m (7'10" x 2'11" x 3'7")
A. Length (Stowed/Transport)	9.5 m (31'2")
B. Width (Stowed/Transport)	2.42 / 2.28 m (7'11" / 7'6")
C. Height (Stowed/Transport)	2.47 / 2.27 m (8'1" / 7'5")
D. Ground Clearance	0.276 m (10")
E. Wheelbase	3 m (9'10")

PRODUCTIVITY	
Overall Lift Capacity Max.	300 / 454 kg (661 / 1000 lb)
Platform Occupancy Max.	2
Platform Rotation	± 90°
Vertical Jib Rotation (Up/Down)	-65° ~ +70°
Turntable Rotation	360° Continuous
Turntable Tailswing (Boom Raised/Stowed)	1.65 / 2.25 m (5'5" / 7'5")
Drive Speed (Stowed)	5 km/h (3.10 mph)
Drive Speed (Raised)	1 km/h (0.62 mph)
Gradeability	40 %
Tilt Sensor Activation (Side to Side/Front to Back)	X 5° / Y 5°
Turning Radius (Inside/Outside)	4.2 / 6.3 m (13'9" / 20'8")
Tire Size (Solid Off-road)	33 x 12 - 20
Drive Steering Type	4WD x 2WS

WEIGHT	
Overall Weight	11,070 kg (24,405 lb)

POWER	
Battery (Lithium)	48 V / 460 Ah
Charger	48 V / 60 A
Lifting Motor	AC 12 kW
Drive Motor	AC 3.3 kW
Auxiliary Power Unit	12 VDC
Hydraulic Tank Capacity	100 L (26 gal 3 pt)

LT22JE Working Range



Guangxi Liugong Machinery Co., Ltd.

No. 1 Liutai Road, Liuzhou, Guangxi 545007, PR China
 T: +86 772 3886124 E: overseas@liugong.com
 www.liugong.com

09/2024 Designed by LiuGong

Specifications and designs are subject to change without notice. Machines shown may include optional equipment. LiuGong standard and optional equipment may vary from region to region. Please consult your LiuGong dealer for information specific to your area. Engine power kW is converted to horsepower (1 kW=1.3596 ps and 1 kW=1.3410 hp) in this file.