



<b>Engine</b>	Yanmar 3TNV88F-ESLY
<b>Rated Power</b>	18.2 kW (24 hp / 25 ps) @ 2,200 rpm
<b>Emission Regulation</b>	EU Stage V
<b>Operating Weight Canopy</b>	3,540 kg (7,804 lbs)
<b>Operating Weight Cab</b>	3,800 kg (8,378 lbs)
<b>Bucket Capacity</b>	0.11 m <sup>3</sup> (0.14 yd <sup>3</sup> )

# 9035Fzts EXCAVATOR

# 9035F<sub>ZTS</sub> SPECIFICATIONS >>>

## ENGINE

Emission Regulation	Stage V
Manufacturer	Yanmar
Model	3TNV88F-ESLY
Rated Power	18.2 kW (24 hp / 25 ps) @ 2,200 rpm
Peak Torque	94.2 N·m (69.5 lbf·ft) @ 1,320 rpm
Number of Cylinders	3
Displacement	1.642 L (0.43 gal)

## UNDERCARRIAGE

Shoe Width	300 mm (12 in)
Number of Shoes per Side	44
Number of Upper Rollers per Side	1
Number of Bottom Rollers per Side	4

## SWING SYSTEM

Swing Speed	10 r/min
-------------	----------

## TRACK DRIVE

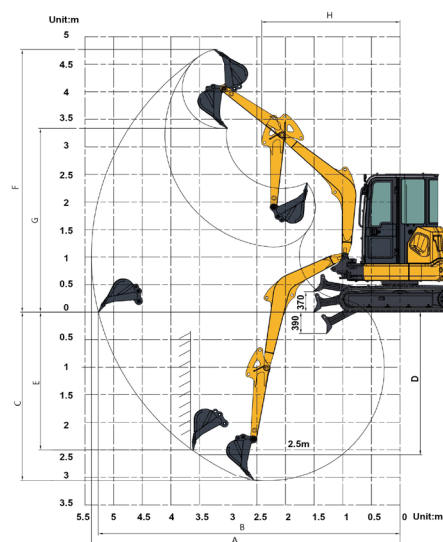
Maximum Travel Speed	4.2 km/h (2.6 mph)
Drawbar Pull	33 kN (7,419 lbf)

## HYDRAULIC SYSTEM

Main Pumps Total Flow	99 L/min (26.2 gal/min)
Relief Pressure, main	25.3 MPa (3,669 psi)

## DIMENSION

A Shipping Length	4,810 mm (15'9")
B Shipping Height – Top of Cab	2,500 mm (8'2")
C Track Gauge	1,400 mm (4'7")
D Undercarriage Width	1,700 mm (5'7")
E Length to Center of Rollers	1,675 mm (5'6")
F Track Length	2,100 mm (6'11")
G Overall Width of Upper Structure	1,600 mm (5'3")
H Tail Swing Radius	850 mm (2'9")
I Counterweight Ground Clearance	580 mm (1'11")
J Height – Top of Boom	1,685 mm (5'6")
K Min. Ground Clearance	258 mm (10")
L Track Shoe Width	300 mm (12")



## BOOM & ARM

Boom Length	2,450 mm (8')
Arm Length	1,320 mm (4'4")

## WORKING RANGE

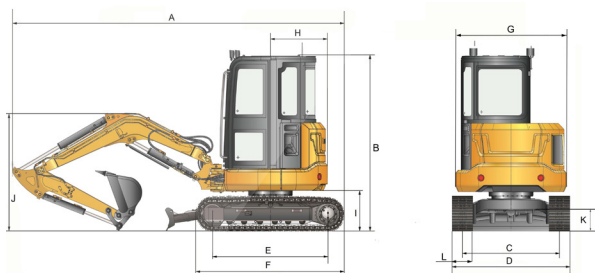
A. Max. Digging Reach	5,385 mm (17'8")
B. Max. Digging Reach on Ground	5,270 mm (17'3")
C. Max. Digging Depth	3,085 mm (10'1")
D. Max. Digging Depth (2.44m) Level	2,610 mm (8'7")
E. Max. Vertical Wall Digging Depth	2,503 mm (8'3")
F. Max. Cutting Height	4,710 mm (15'5")
G. Max. Dumping Height	3,310 mm (10'10")
H. Min. Front Swing Radius	2,416 mm (7'11")
Dozer - Down	390 mm (15")
Dozer - Up	370 mm (14.6")
Bucket Digging Force (ISO)	30 kN (6,744 lbf)
Arm Digging Force (ISO)	20 kN (4,496 lbf)

## BUCKET PERFORMANCE

Std. Bucket Heaped Capacity (Referenced)	0.11 m <sup>3</sup> (0.14 yd <sup>3</sup> )
--	---

## SERVICE CAPACITIES

Fuel Tank	55 L (14.5 gal)
Engine Oil	6.7 L (1.8 gal)
Cooling System	7 L (1.9 gal)
Hydraulic Reservoir	42 L (11.1 gal)
Hydraulic System Total	58 L (15.3 gal)



Guangxi Liugong Machinery Co., Ltd.

No. 1 Liutail Road, Liuzhou, Guangxi 545007, PR China  
T: +86 772 3886124 E: overseas@liugong.com  
www.liugong.com

02/2024 Designed by LiuGong

Specifications and designs are subject to change without notice. Machines shown may include optional equipment. LiuGong standard and optional equipment may vary from region to region. Please consult your LiuGong dealer for information specific to your area. Engine power kW is converted to metric hp in this file (1 kW=1.34 hp).