



<b>Engine</b>	Cummins B6.7
<b>Rated Power</b>	116 kW (156 hp / 158 ps) @ 2,200 rpm
<b>Maximum Dig Depth</b>	6,530 / 6,420 mm
<b>Standard Bucket Capacity</b>	1.0 m <sup>3</sup>
<b>Operating Weight</b>	25,500 - 28,200 kg

# 925F<sub>CR</sub> EXCAVATOR

# 925<sup>CR</sup> SPECIFICATIONS >>>

## PERFORMANCE PARAMETERS

Operating Weight	25,500-28,200 kg
Std. Bucket Heaped Capacity (Referenced)	1.0 m <sup>3</sup>
Maximum Travel Speed	5.4 km/h
Swing Speed	10.5 r/min
Drawbar Pull	220 kN
Bucket Digging Force (ISO)	* 97 / 105 kN
Arm Digging Force (ISO)	* 140 / 152.5 kN

\* Normal / Power Boost

## ENGINE

Emission Regulation	Stage V
Manufacturer	Cummins
Model	B6.7
Rated Power	116 kW (156 hp / 158 ps) @ 2,200 rpm
Peak Torque	746 N·m @ 1,300 rpm
Number of Cylinders	6
Displacement	6.7 L

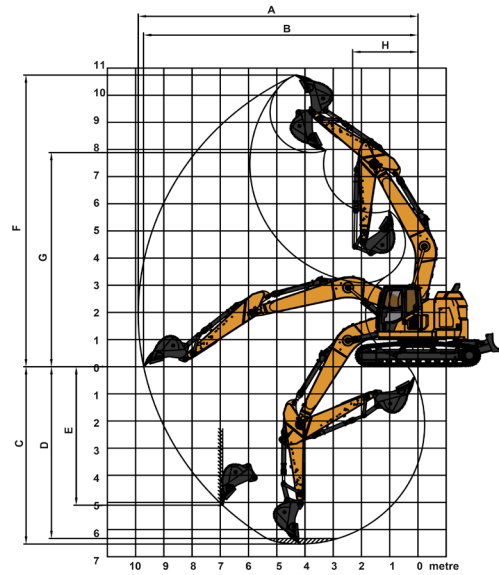
## UNDERCARRIAGE

Shoe Width	600 mm
Number of Shoes per Side	49
Number of Upper Rollers per Side	2
Number of Bottom Rollers per Side	8

## DIMENSION

A. Transport Length	* 8,960 / 9,020 mm
B. Transport Height (Top of Boom hose)	* 3,060 / 3,000 mm
C. Track Gauge	* 2,390 / 2,390 mm
D. Transport Width	* 2,990 / 2,990 mm
E. Length to Center of Rollers	* 3,650 / 3,650 mm
F. Track Length	* 4,450 / 4,450 mm
G. Overall Width of Upper Structure	* 2,990 / 2,990 mm
H. Tail Swing Radius	* 1,780 / 1,780 mm
I. Counterweight Ground Clearance	* 1,010 / 1,010 mm
J. Cab Height	* 2,980 / 2,980 mm
K. Min. Ground Clearance	* 470 / 470 mm

\* Mono-Boom / Two-Piece Boom



## WORKING RANGE

Boom Length	* 5,710 / 5,710 mm
Arm Length	* 2,915 / 2,915 mm
A. Max. Digging Reach	* 9,906 / 10,020 mm
B. Max. Digging Reach on Ground	* 9,720 / 9,830 mm
C. Max. Digging Depth	* 6,530 / 6,420 mm
D. Max. Digging Depth, 2.44 m (8') Level	* 6,330 / 6,310 mm
E. Max. Vertical Wall Digging Depth	* 5,100 / 5,100 mm
F. Max. Cutting Height	* 10,740 / 11,540 mm
G. Max. Dumping Height	* 7,890 / 8,560 mm
H. Min. Front Swing Radius	* 2,310 / 2,210 mm

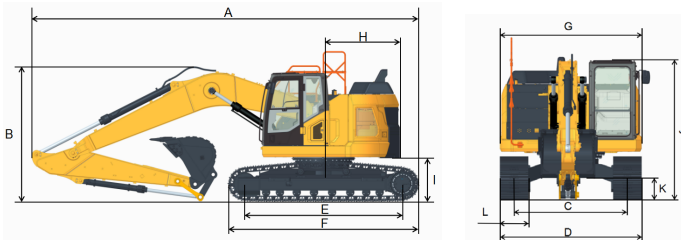
\* Mono-Boom / Two-Piece Boom

## SERVICE CAPACITIES

Fuel Tank	320 L
Engine Oil	25 L
Cooling System	25 L
Hydraulic Reservoir	182 L
Hydraulic System Total	320 L

## HYDRAULIC SYSTEM

Main Pumps Total Flow	2×228 L/min
Relief Pressure, main	34.3 MPa
Relief Pressure, boost	37.0 MPa



Guangxi Liugong Machinery Co., Ltd.

No. 1 Liutai Road, Liuzhou, Guangxi 545007, PR China  
T: +86 772 3886124 E: overseas@liugong.com  
www.liugong.com

Specifications and designs are subject to change without notice. Machines shown may include optional equipment. Liugong standard and optional equipment may vary from region to region. Please consult your Liugong dealer for information specific to your area. Engine power kW is converted to horsepower (1 kW=1.3596 ps and 1 kW=1.3410 hp) in this file.

03/2024 Designed by LiuGong